

## Minimum Documentation Fiche

composed by national/ regional working party of DO.CO.MO.MO SECTION BASILICATA-PUGLIA



### 0.1 Picture of building/site

depicted item: Cinema-teatro Duni  
source: photo by Pierangelo Laterza  
date: 2019

## 1. Identity of building

### 1.1 current name of building

Duni cinema-theater

### 1.2 variant or former name

-

### 1.3 number & name of street

Via Lucana, 17 (Via Roma, 10)

### 1.4 town

Matera

### 1.5 province/state

Matera/Basilicata

**1. 6 zip code**

75100

**1. 7 country**

Italy

**1. 8 national grid reference**

40°66'77 N 16°60'53

**1. 9 classification/typology**

Architecture for the community / Cinema-theater

**1. 10 protection status & date**

Art.10, c.3, lett.a, del D.Lgs 22 January 2004, n.42

**2. History of building****2. 1 original brief/purpose**

Architecture for the community / Cinema-theater

**2. 2 dates: commission/ completion**

1946/1949

**2. 3 architectural and other designers**

Ettore Stella

**2. 4 others associated with building**

-

**2. 5 significant alterations with dates**

-

**2. 6 current use**

The building is currently unusable.

**2. 7 current condition**

General state of decay resulting from the lack of a maintenance plan. Search of a new function is underway by the Municipality of Matera.

**3. Description****2. 1 general description**

The "Duni Cinema-Theater", designed by architect Ettore Stella in 1946 and built between 1947 and 1948. The building represents the maximum expression of the Modern Movement for the urban and architectural transformation of the city of Matera. The cinema, delimited by Via Lucana and Via Roma, takes the form of a long glazed and luminous vestibule, which becomes both a suggestive urban gallery and a distribution space for the foyer. The foyer is also characterized by the presence of two ramps that develop in space and by the presence of shaped pillars. They represent an organic architecture anticipating the teachings spread by Bruno Zevi in Italy.

**3. 2 construction**

The plant is characterized by excellent functionality and spatial permeability. The elements that most characterize the spatial and architectural configuration of the foyer are represented by shaped column in reinforced concrete and finished in stucco. The ramps made with a slab in reinforced concrete and covered with the "vipla" (material made of polyvinyl chloride and marketed in shaped slabs) and stone.

The railings are in glass and wood. The roof of the foyer is made of curved reinforced concrete trusses, on which prefabricated concrete panels are inserted. The surfaces of the walls are in stone. The gallery is configured as a natural extension of the foyer and the external garden. The large reinforced concrete overhang of the gallery dominates the stalls and reaches out towards the scene, framed by a slight ceiling slab and two lateral wings oriented to favor the acoustics. The ceiling and internal coverings of the room are made with "populit gamma" slabs, a sound-absorbing natural material mainly composed of wood fibers with high-strength cement produced and marketed by "Società Anonima Fabbrica Fiammiferi ed Affini", founded in 1898 in Milan. The plant equipment includes an innovative thermal ventilation system for the time and transparency projection equipment.

### **3. 3 context**

The project is located in a small lot, inserted between two main roads (Via Lucana and Via Roma). Ettore Stella defines the planimetric system by providing access to the hall from both streets and configures a long vestibule, widely glazed and luminous, which becomes an urban gallery as well as the large foyer of the theater. In the original project, a hotel building would have had to close the front on via Lucana, giving an architectural shape towards the street and creating a more visible access to the room by creating, on the ground floor, a cafeteria in continuity with the cinema vestibule. This part of the project will not be carried out, which is why this work has no external architecture.

## **4. Evaluation**

### **4. 1 technical**

The construction of the "Cinema-teatro Duni" represents a turning point in the public architecture of Matera. In this project there are economic investments, architectural choices and above all the use of new construction techniques and innovative materials. These materials represent the symbol of Italy's new industrialization process, characterized by absolute uniqueness and beauty, as well as testimony to the wise "*ars costruendi*" of local workers, daughters of an ancient 'stone' civilization and expression of a new civic and housing condition.

### **4. 2 social**

High value.

### **4. 3 cultural & aesthetic**

The Cinema-theater project inaugurates an important season for the city of Matera, preparing it for further and significant contributions in the following years. It announces values in a city still marked by bureaucratic construction; to say it with Vincenzo Monaco: «[...] *aveva Cristo finalmente mandato un suo profeta oltre Eboli che non fosse il solito ingegnere del Genio Civile?*». In fact, in the immediate post-war period, a great aspiration of the city to modernize and evolve towards civil conditions of life was alive.

### **4. 4 historical**

The project represents the maximum expression of the renewed trends of the Modern Movement sought by the architect Ettore Stella for the urban and architectural transformation of the city of Matera and applied in return by the School of Architecture in Rome. Some elements of the project establish relationships with the organic architecture that Stella introduced to Matera after assimilating the lesson of the great American masters from Wright and Neutra to Schindler, whose works were spread in Italy by Bruno Zevi after «*l'esilio americano*».

### **4. 5 general assessment**

The project represents the synthesis of the architectural language of Ettore Stella, which is expressed through the research of Modern architecture and organic architecture influences intertwined and declined to the economic, social, architectural and urban situation of the city of Matera.

## 5. Documentation

### 5. 1 principal references

- ACITO, Luigi, *"Modernità ai margini. Ettore Stella 1915-1951"*, in *"documenti di architettura"* n.186 (edizione speciale), Electa architettura, Milano, 2011, pp.38-47.
- ACITO, Luigi, *"Matera. Architetture del Novecento 1900-1970"*, La Stamperia Liantonio, Matera, 2017, p.143-146.
- ACITO, Luigi, *"Il cinema-teatro Duni a Matera. Un'architettura moderna da tutelare"*, Libria, Melfi, 1999.
- PAGLIUCA, Antonello, *"Materiali Made in Italy. Avanguardia Italiana nell'industria delle costruzioni del primo '900"*, Gangemi Editore, Roma, 2019.
- PAGLIUCA, Antonello; SÀITO, Mauro (a cura di), *"Catalogo Mostra 9x100='900. DO.CO.MO.MO. Italia 9 Itinerari x 100 Architetture del '900 Basilicata-Puglia"*, Gangemi Editore, Roma, 2019, pp.122-123.
- MURATORE, Giorgio, *"Le cose del tempo"*, in Del Conte Francesco (a cura di) *"Opere e Progetti. Mauro Sàito"*, Libria, Melfi.
- MOSCHINI, Francesco, *"L'architettura messa in scena"*, in Valenti Alessandro (a cura di) e Prati Franz, *"Eclettiche astrazioni del moderno"*, Libria, Melfi, 1996.
- SÀITO, Mauro; POZZI, Carlo, *"Identità di Matera. Visita guidata tra antico e moderno"*, Basilicata editrice, 1990.
- STELLA, Ettore, *"Un cinematografo a Matera"*, in *"Domus"*, n.256, 1951, p.26.

### 5. 2 visual material attached

- Fig.01 – Design plan (Acito 2011)
- Fig.02 – Entrance to the cinema-theater Duni; Via Roma (Acito 2011)
- Fig.03 – Entrance to the cinema-theater Duni (Acito 2011)
- Fig.04 – Foyer (Acito 2011)
- Fig.05 – Foyer (Acito 2011)
- Fig.06 – Theater gallery (Acito 2011)
- Fig.07 – Theater gallery (Acito 2011)
- Fig.08 – Theater gallery (Acito 2011)

### 5. 3 rapporteur/date

Antonello Pagliuca (Professore associato – ICAR/10 - Università degli Studi della Basilicata - Matera)  
Donato Gallo (PhD st. - Università degli Studi della Basilicata - Matera)  
Pier Pasquale Trausi (PhD st. - Università degli Studi della Basilicata - Matera)  
Giuseppe D'Angiulli (PhD st. - Università degli Studi della Basilicata - Matera)

## 6. Fiche report examination by ISC/R

name of examining ISC member:

date of examination:

approval:

working party/ref. no:

NAI ref. no:

comments:



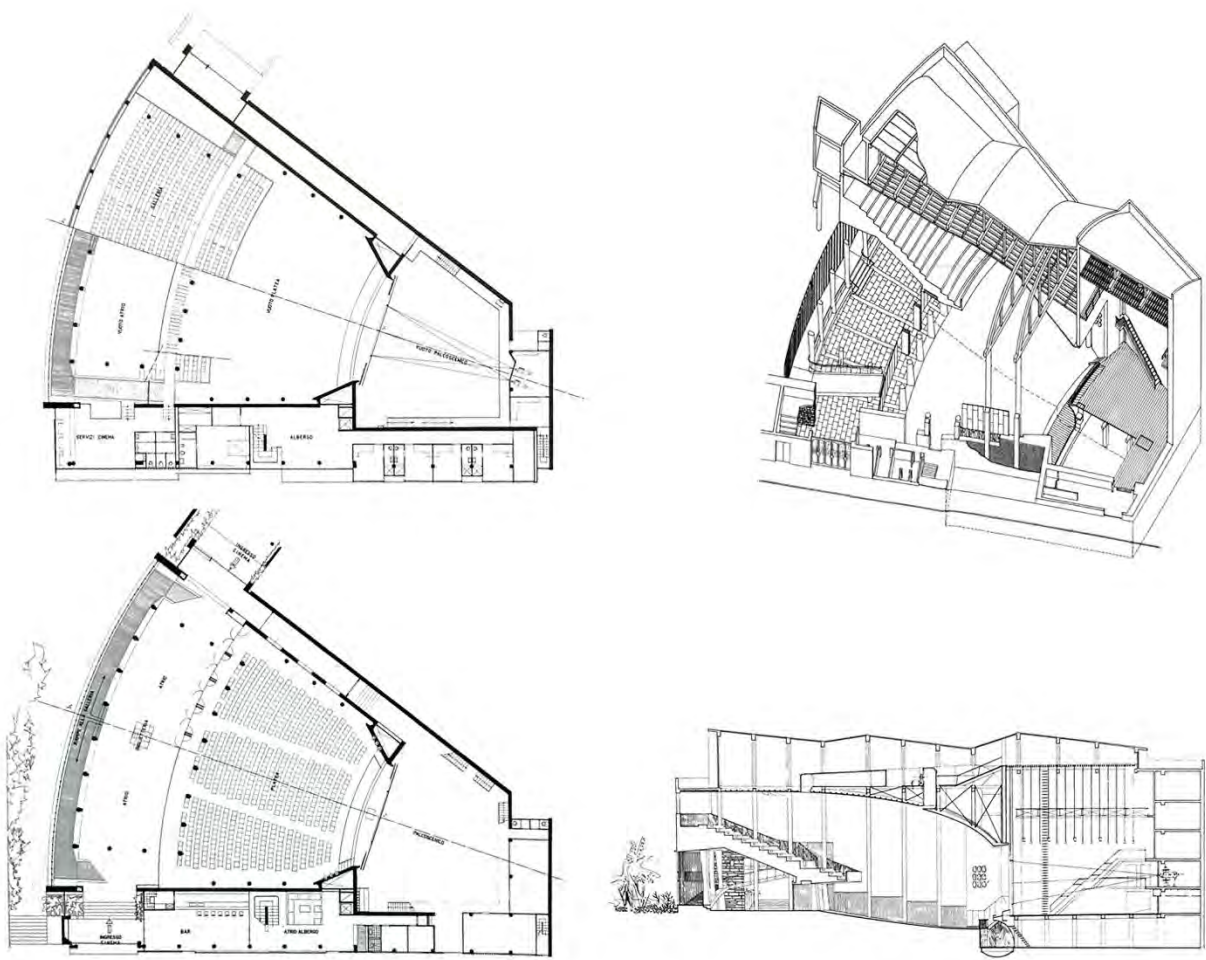


Fig.01 – Design plan (Acito 2011)



Fig.02 – Entrance to the cinema-theater Duni; Via Roma (Acito 2011)







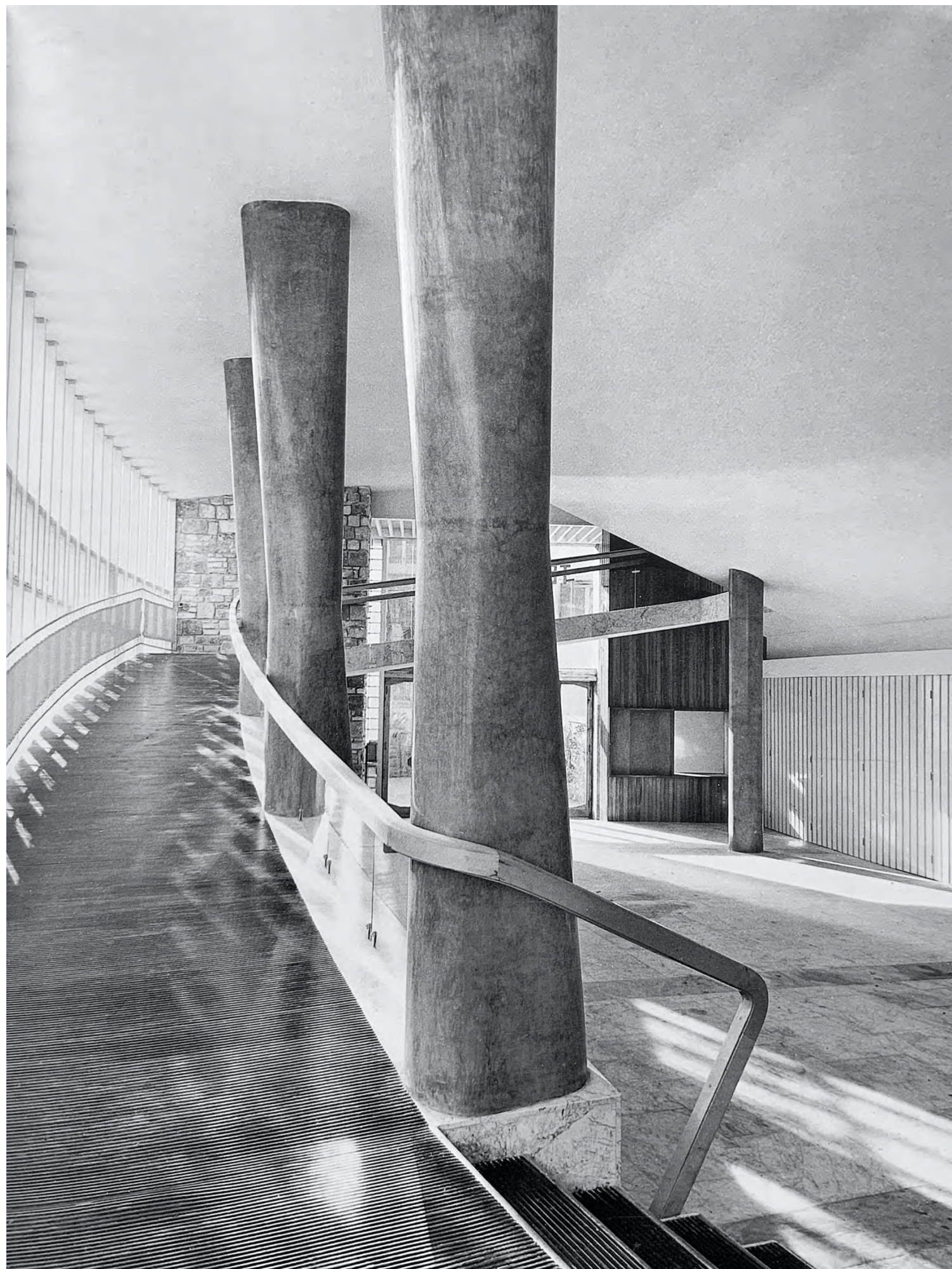








Fig.05 – Foyer (Acito 2011)



Fig.06 – Theater gallery (Acito 2011)





Fig.07 – Theater gallery (Acito 2011)



Fig.08 – Theater gallery (Acito 2011)